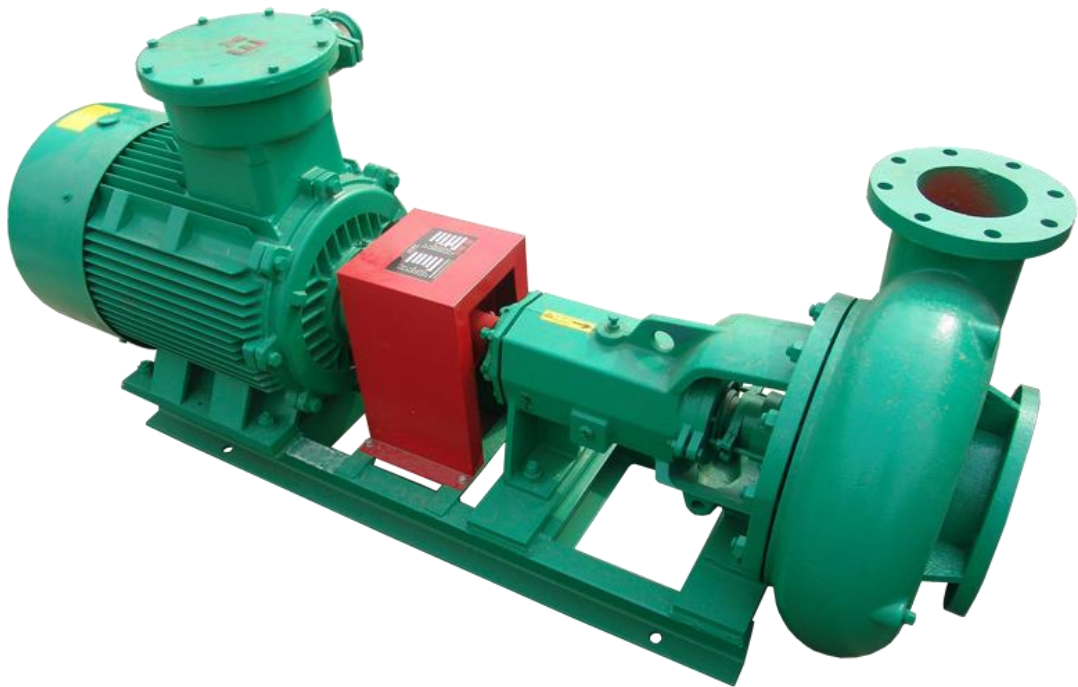


 Solids Control

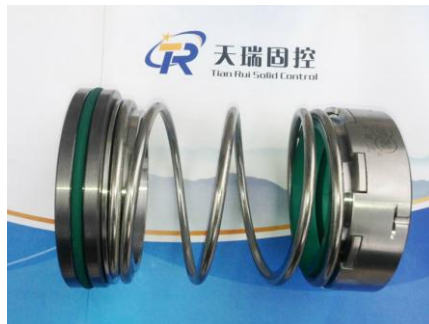
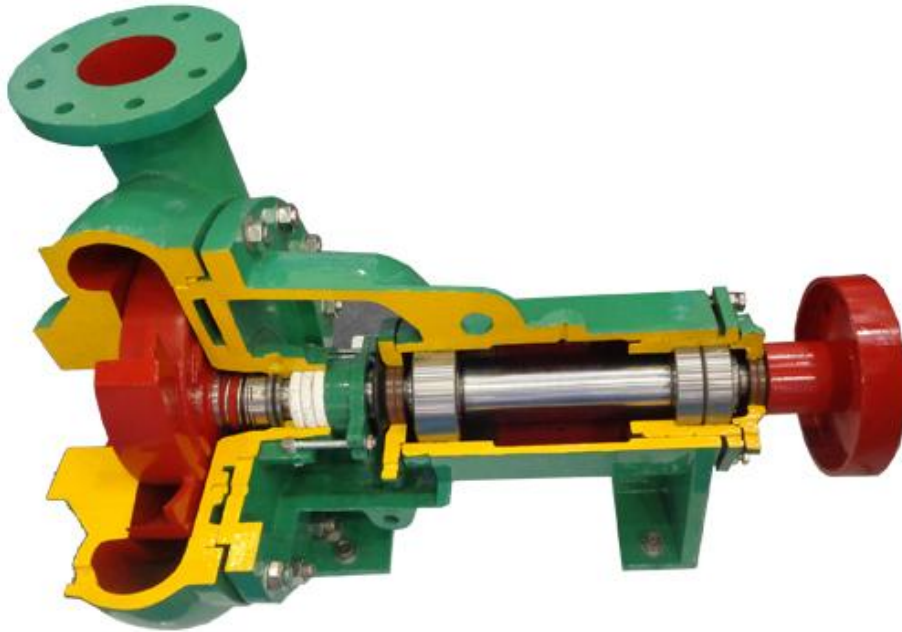
Centrifugal Pump



Xi'an TianRui Petroleum Machinery Equipment CO., LTD
API Certified Manufacturers

Centrifugal Pump

Centrifugal Pump is designed for drilling fluid or industrial suspension (slurry), use of modern design theory and design, pumping abrasive and viscous (Features) and corrosive liquids. Compared with the General pump, with excellent performance, high traffic, high temperature, long service life, easy maintenance, high reliability and remarkable energy saving characteristics, Now onshore and offshore drilling is widely used around the world. We will provide customers with the best products to meet different conditions.

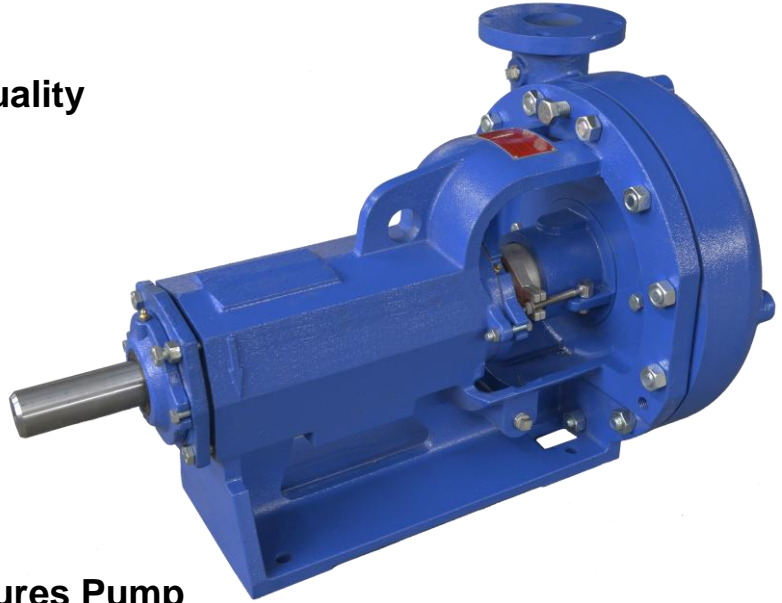


Why choose TR Sand Pump?

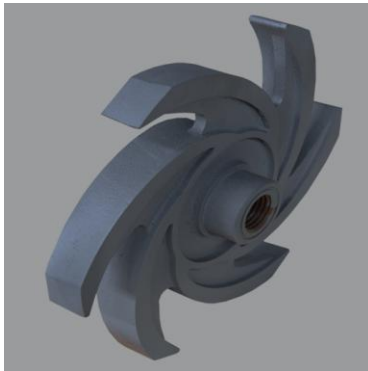
- The mechanical seal is made of high anti-corrosive alloy. More durable and Longer service life.
- Bearings are imported SKF. More assurance on quality.
- Bearing lubrication can be oil and grease. Make bearing more adaptable and long life.
- Thicker pump shell.
- Sand pump shell using alloy gray iron, longer life.
- Selection of alloy cast iron impeller, and greater resistance to corrosion.
- Sand pump parts can interchangeable to national brands.

With international level quality

Interchangeable with
MISSION series

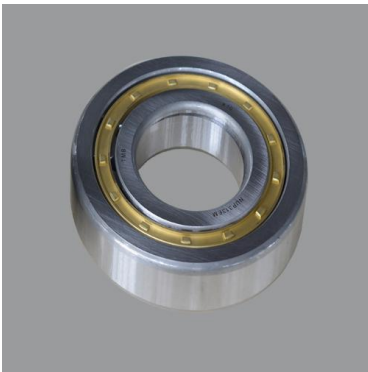


TRSB Series Design Features Pump



- **Impeller with open vane structure**

The open vane structure impeller reduces the shaft load to minimum, more suitable for transferring high density and high viscosity mud.



- **Higher efficiency and longer service**

The vane profile complying with the hydraulic principle, increase the output and efficiency. Utilizing wear-resistant materials for the key parts to prolong the service life.

- **Axial adjustment structure**

Axial adjustment structure makes it free to adjust the clearance between impeller and mechanical seal to ensure equipment operation more reliable.

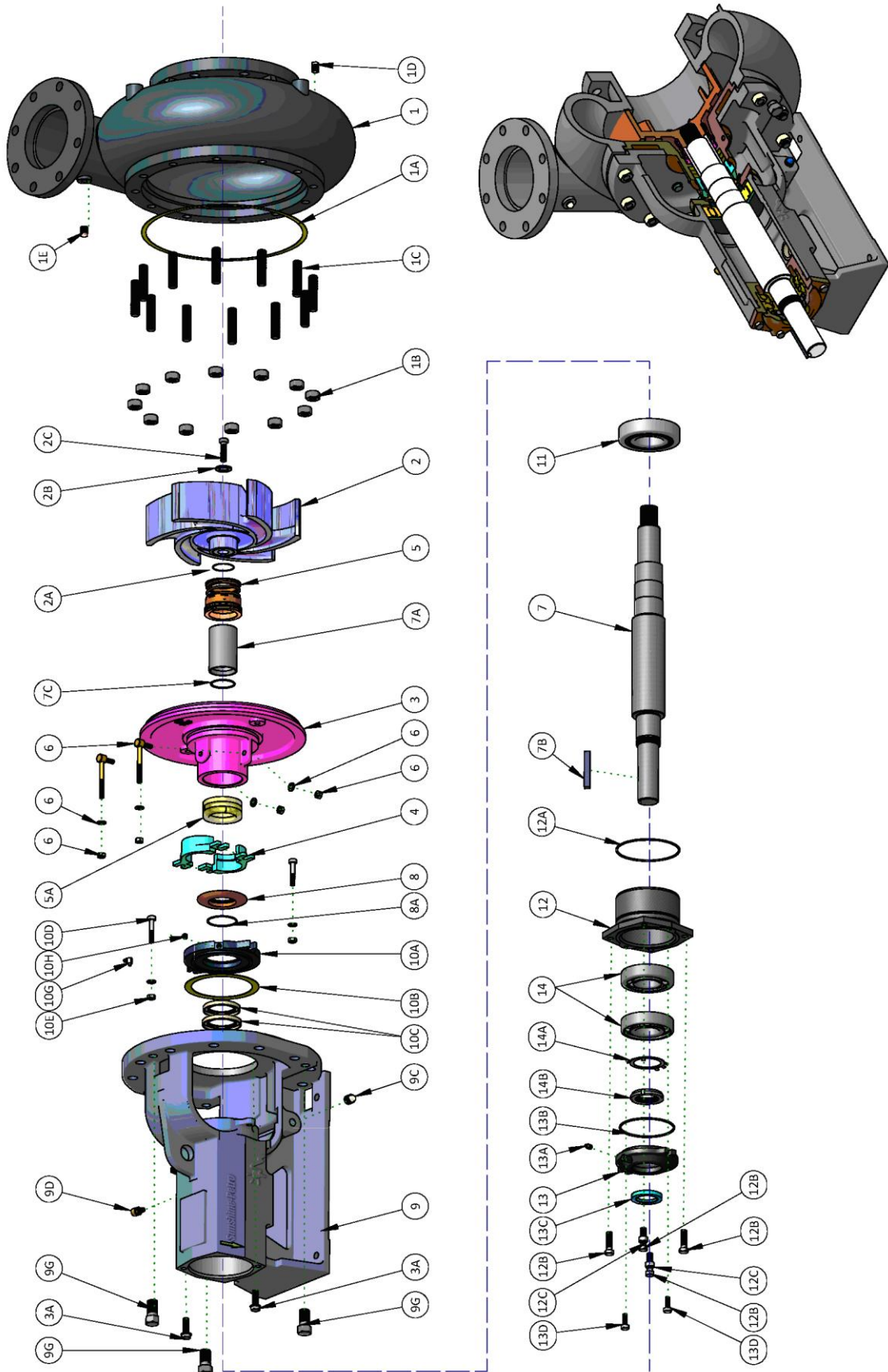


- **More Choice**

A variety of pump casing and impeller can meet different requirements of the customers.

- **The Same Power Frame**

The same power frame reduced the spare parts.



Parts List for TRSB Series Centrifugal Pump

S/n.	Part name	Parts No.	"TR Solids Control" Parts No.	Qty	Material	S/n.	Part name	Parts No.	"TR Solids Control" Parts No.	Qty	Material
1*	Pump shell	See below table	See below table	1	Hard Iron	10D	Bolt for inside bearing cover	3861-1	TR-3861-1	2	Stl
1A	Seal washer for pump shell	10399-46-1	TR-10399-46-1	1	Vellumoid	10E	Nut for inside bearing cover	3932-2	TR-3932-2	2	Stl
1B	Tightening nut for pump shell 3/4	3932-61	TR-3932-61	12	Stl	10F					
1C	Tightening nut for pump shell 3/4X85	3862-76	TR-3862-76	12	Stl	10G	Alemite fitting NPT1/8	21641-01	TR-21641-01H	1	Stl
1D	Square head plug 3/8	8505-04-01	TR-8505-04-01	1	Stl	11	Inside bearing NUP313E	N/A	TR-661009010H	1	Vendor
1E	Square head plug 1/2	8505-04-01	TR-8505-04-01	1	Iron	12	Axial adjustment collar	20624-01-01	TR-20624-01-01	1	Iron
2*	Impeller	See below table	See below table	1	Iron	12A	O-ring 140X3.55	7496-253	TR-7496-253	1	Buna-n
2A	O-ring 46.2X1.8	19110-72	TR-19110-72	1	Viton	12B	Nut for axial adjustment collar	3861-138	TR-3861-138	4	Stl
2B	Lock washer for impeller		TR-7300239	1	Stl	12C	Detrusion nut for axial adjustment collar	3932-62	TR-3932-62	2	Stl
2C	Lock washer for impeller		TR-7415648	1	Stl	13	Outside bearing	20617-01-01	TR-20617-01-01	1	Iron
3*	Mechanical seal box	22223-01-30	TR-22223-01-30	1	Hard Iron	13A	Alemite fitting NPT1/8		TR-661010020	1	Stl
3*	Packing seal box	20614-01-30	TR-20614-01-30	1	Hard Iron	13B	O-ring 120X3.55	7496-26	TR-7496-26	1	Buna-n
3A	Tightening nut for mechanical seal box	3861-117	TR-3861-117	2	Stl	13C	Oil seal 47.63X69.85X9.525	20619-02	TR-20619-02	1	Buna-n
4	Packing pressing bush	20622A	TR-20622A	1	Bronze	13D	Bolt for outside bearing cover	3861-139	TR-3861-139	2	Stl

5	Mechanical seal	22451-1	TR-22451-1	1	Tungsten Carbide	14	Bearing 7311B/DB	N/A	TR-648408201S	1	Vendor
5A	Packing 12X12	25014-04M-B	TR-25014-04M-B	3	Kevlar	14A	Lock washer	6124-4	TR-6124-4	1	Stl
6	L bolt assembly	B3701A	TR-B3701A	2	Stl	14B	Lock nut	6123-4	TR-6123-4	1	Stl
7	Shaft	20612-02-33	TR-20612-02-33	1	AISI 4140	泵壳					
7A	Wear bushing (Mechanical seal)	20943-21	TR-20943-21	1	AISI E7140	1*	Pump case, 3x2x13	19203-01-30A	TR-19203-01-30A	1	Hard Iron
7A	Wear bushing (Packing seal)	20613-21G-7A	TR-20613-21G-7A	1	AISI E7140	1*	Pump case, 4x3x13	19205-01-30A	TR-19205-01-30A	1	Hard Iron
7B	Key	4372-5-21	TR-4372-5-21	1	416TR	1*	Pump case, 5x4x11	19222-01-30A	TR-19222-01-30A	1	Hard Iron
7C	O-ring 51.5X2.65	23444-01-72	TR-23444-01-72	1	Viton	1*	Pump case, 6x5x11	19122-01-30A	TR-19122-01-30A	1	Hard Iron
8	Water retaining ring	22210-1A	TR-22210-1A	1	Bronze	1*	Pump case, 6x5x14	19123-01-30A	TR-19123-01-30A	1	Hard Iron
8A	O-ring 63X2.65			1	Viton	1*	Pump case, 8x6x11	19763-01-30A	TR-19763-01-30A	1	Hard Iron
9	Bearing base	20618-12-1	TR-20618-12-1	1	Cast Iron	1*	Pump case, 8x6x14	19117-01-30A	TR-19117-01-30A	1	Hard Iron
9A						1*	Pump case, 10x8x14	20937-01-30A	TR-20937-01-30A	1	Hard Iron
9B						叶轮					
9C	Square head plug 1/2	8505-05	TR-8505-05	1	Iron	2*	Impeller for pump, 3x2x13	19204-XX-30	TR-19204-XX-30	1	Hard Iron
9D	Breathing mouth	8267-01	TR-8267-01	1	Stl	2*	Impeller for pump, 4x3x13	19206-XX-30	TR-19206-XX-30	1	Hard Iron
9E						2*	Impeller for pump, 5x4x14	19224-XX-30	TR-19224-XX-30	1	Hard Iron
9F						2*	Impeller for pump, 6x5x11	19121-XX-30	TR-19121-XX-30	1	Hard Iron
9G	Detrusion bolt for pump shell	2538-1A	TR-2538-1A	3	Stl	2*	Impeller for pump, 6x5x14	19121-XX-30	TR-19121-XX-30	1	Hard Iron
10A	Inside bearing cover	20626	TR-20626A	1	Iron	2*	Impeller for pump, 8x6x11	19121-XX-30	TR-19121-XX-30	1	Hard Iron
10B	Seal washer for inside bearing cover	20625	TR-20625	1	Vegetable Fiber	2*	Impeller for pump, 8x6x14	19116-XX-30	TR-19116-XX-30	1	Hard Iron
10C	Oil seal	20619-01	TR-20619-01	2	Buna-n	2*	Impeller for pump, 10x8x14	21867-XX-30	TR-21867-XX-30	1	Hard Iron

XX or A0 - Impeller code - First X is equal to the integer of impeller diameter (inch) - 4. Thus 10 = 6, 9 = 5, 8 = 4, etc... 14 Use alphabet A.

Second X is the magnification of 1/8. Thus 1/8 = 1, 1/4 = 2, 1/2 = 4, etc... thus a impeller code of 10.5 is 64, impeller code of 12 is 80, impeller code of 13.25 is 92 etc.

TRSB Centrifugal Pump Parameter (Under 50HZ)

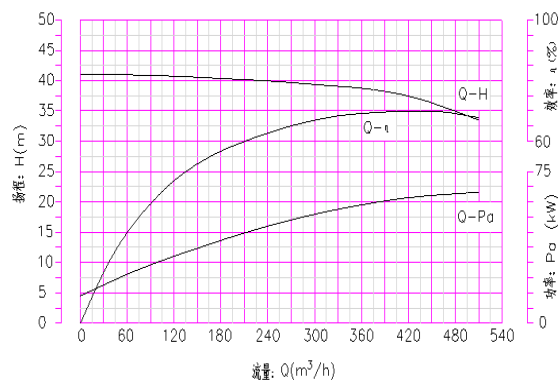
Model	Capacity	Head	Power	Speed	Efficiency
TRSB8x6-14	320 m ³ /h	40 m	75KW	1480 rpm	65%
TRSB8x6-13	275 m ³ /h	35m	55KW	1480 rpm	64%
TRSB8x6-12	240 m ³ /h	33m	45KW	1480 rpm	64%
TRSB6x5-13	200 m ³ /h	34 m	45KW	1470 rpm	60%
TRSB6x5-12	150 m ³ /h	30 m	37KW	1470 rpm	60%
TRSB6x5-11	120 m ³ /h	21 m	30KW	1470 rpm	62%
TRSB5x4-12	90 m ³ /h	30 m	22KW	1460 rpm	56%
TRSB4x3-13	50 m ³ /h	40 m	15KW	1460 rpm	48%
TRSB4x3-12	45 m ³ /h	30 m	11KW	1460 rpm	47%
TRSB3x2-12	23 m ³ /h	29 m	7.5KW	1450 rpm	39%

TRSB Centrifugal Pump Parameter (Under 60HZ)

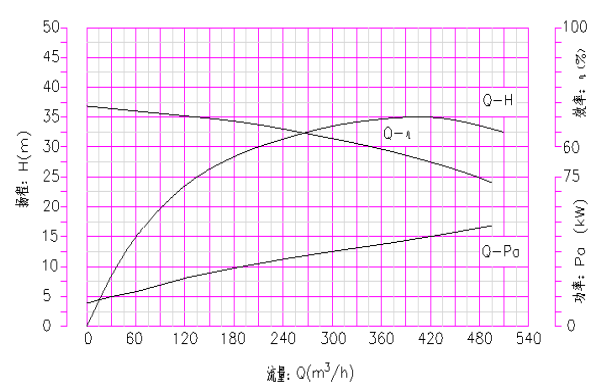
Model	Capacity	Head	Power	Speed	Efficiency
TRSB8x6-12	335 m ³ /h	43 m	75KW	1780 rpm	66%
TRSB6x5-13	240 m ³ /h	48 m	75KW	1780 rpm	61%
TRSB6x5-12	196 m ³ /h	48 m	55KW	1780 rpm	61%
TRSB5x4-14	149 m ³ /h	61 m	45KW	1760 rpm	58%
TRSB5x4-12	120 m ³ /h	40 m	37KW	1760 rpm	56%
TRSB5x4-11	112 m ³ /h	45 m	30KW	1760 rpm	58%
TRSB5x4-10	105 m ³ /h	30 m	22KW	1750 rpm	57%
TRSB4x3-13	80 m ³ /h	45 m	22KW	1750 rpm	50%
TRSB4x3-11	55 m ³ /h	45 m	15KW	1750 rpm	37%
TRSB3x2-12	28 m ³ /h	45 m	11KW	1750 rpm	40%
TRSB3x2-11	25 m ³ /h	35 m	7.5KW	1750 rpm	41%

Performance Curve

TRSB8X6-14 Impeller14" 1450rpm



TRSB8X6-13 Impeller14" 1450rpm



If you need to know more details about Centrifugal Pump, then you contact us.

Company: Xian Tianrui Petroleum Machinery Equipment CO., LTD

TEL: 86-29-86332919 FAX: 86-29-86332919

E-mail: sales@trsolidscontrol.com